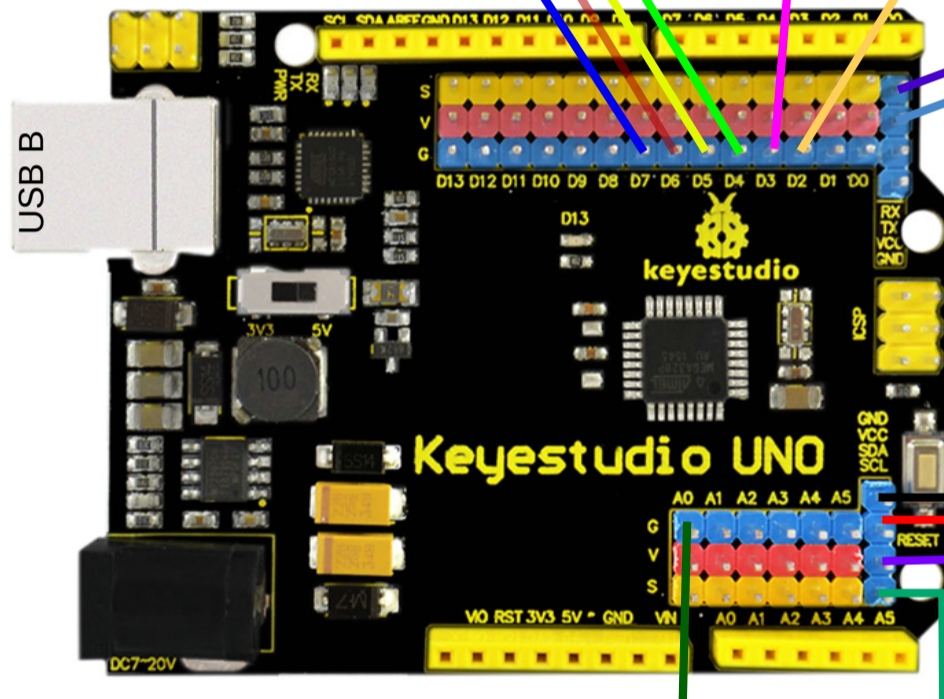
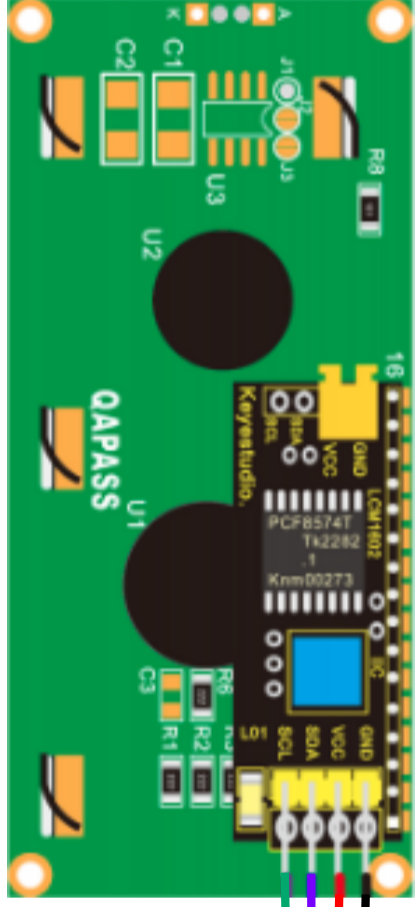
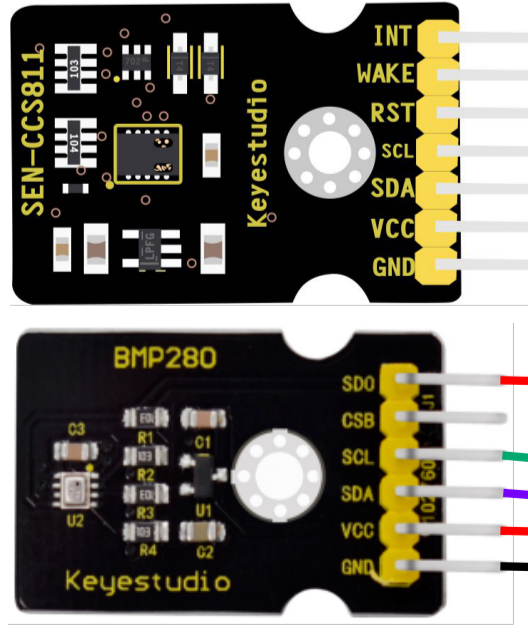


VCC -
GND -



SDA (Datos) y SCL (Clock). Conector I2C, IIC o TWI (Two Wire Interface)

WiFi: Pines Tx X Rx LED Amarillo: D5 CCS811: I2C + GND extra
 Altavoz: Pin D3 LED Rojo: D6 Micro: A0
 DHT22: Pin D2 LCD: I2C Modo: D7
 LED Verde: D4 BMP280: I2C

Proyecto

Semáforo óptico/acústico avisador nivel C02

